



State of Vermont

Department of Mental Health
Commissioner's Office
Redstone Office Building
26 Terrace Street
Montpelier VT 05609-1101

<http://mentalhealth.vermont.gov/>

Agency of Human Services

[phone] 802-828-3824

[fax] 802-828-1717

[tty] 800-253-0191

MEMORANDUM

TO: Health Reform Oversight Committee

FROM: Frank Reed, Commissioner
Department of Mental Health

DATE: December 15, 2015

RE: November 2015 Monthly DMH Report to the Health Reform Oversight Committee

Attached please find the Department of Mental Health's November 2015 report to the Health Reform Oversight Committee.

The report consists of the following graphs:

- Utilization of Inpatient and Crisis Beds
- Level 1 Inpatient Capacity Utilization Statewide and by Hospital
- People with Involuntary Admissions, Comparison of Level 1 and Non-Level 1
- Involuntary Non-Level 1 and Level 1 bed days
- Average Numbers of People Waiting Inpatient Placement
- Vermont State Hospital and Designated Hospitals, Emergency and Forensic Admissions
- Adult Inpatient Utilization and Bed Closures
- Wait Times in Hours for Involuntary Inpatient Admission
- Daily Number of Involuntary Adults Awaiting Inpatient Placement
- Daily Number of Voluntary Adults Awaiting Inpatient Placement and Closed System Beds
- Sheriff Supervisions in Emergency Departments
- Average Distance to Psychiatric Inpatient Care
- Hospital Admissions, Length of Stay, and Readmissions
- Vermont Department of Mental Health System Snapshot (2012-2015)

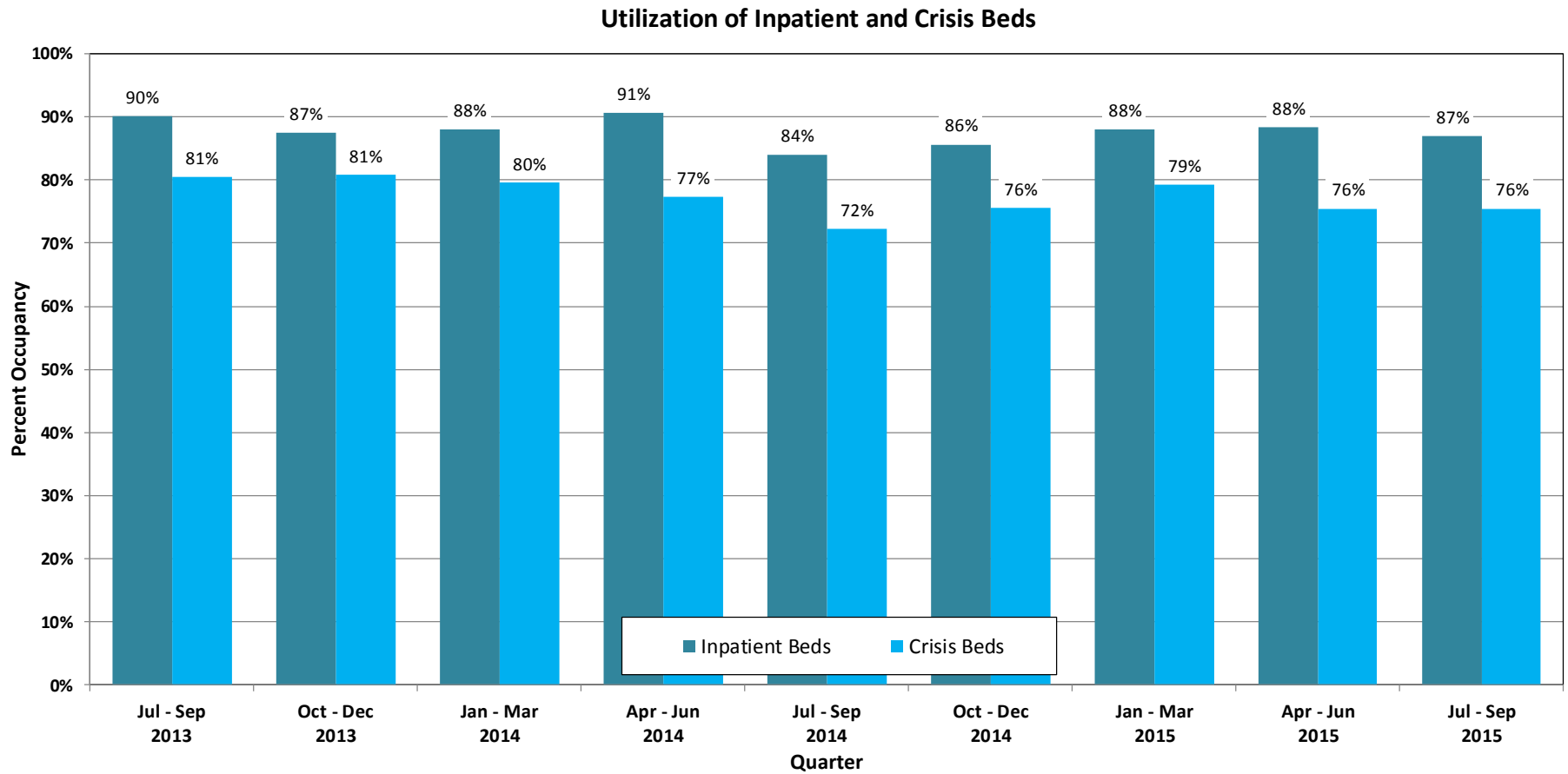
Please direct any inquiries for additional data collection or report content development to Frank Reed, Commissioner of the Department of Mental Health; frank.reed@vermont.gov.

Respectfully submitted,

Frank Reed
Commissioner
Department of Mental Health

Health Reform Oversight Committee
 Department of Mental Health – October 2015 Report

Utilization of Inpatient and Crisis Beds (July 2013 – September 2015)



Based on data reported to the Vermont Department of Mental Health (DMH) by crisis bed programs and inpatient facilities for adult care using the electronic bed boards system. Programs are expected to report to electronic bed boards a minimum of once per day to update their census. State averages are adjusted to exclude programs on days where there were no updates submitted to the bed board.

Level 1 Inpatient Capacity Utilization Statewide and by Hospital (Part 1 of 2)

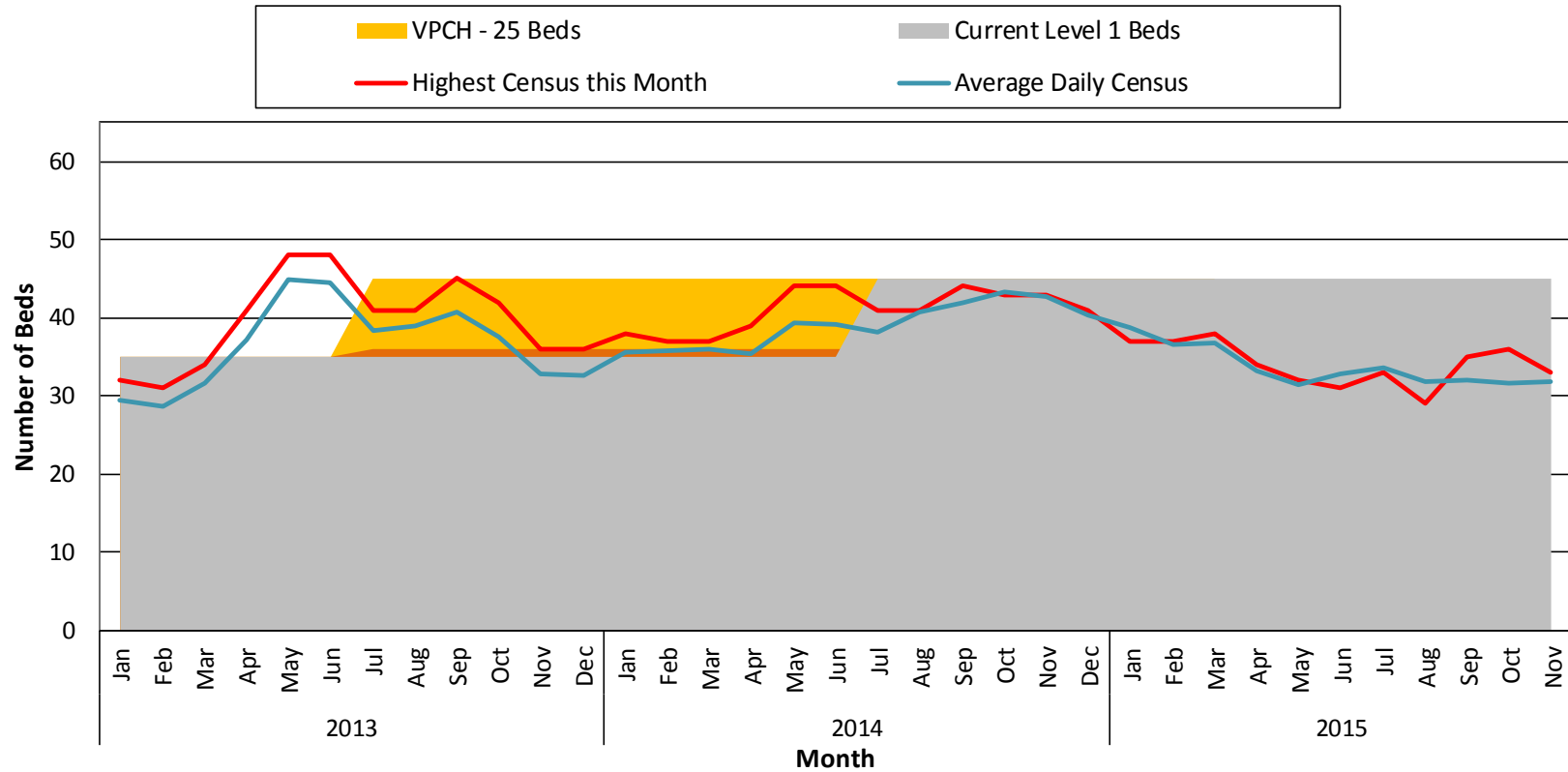
Level 1 Inpatient Utilization: Statewide and By Hospital 2014-2015

| SYSTEM TOTAL | 2014 | | | | | 2015 | | | | | | | | | | |
|-------------------------------------|-------|-------|-------|-------|-------|-------|-------|-------|-------|-------|-------|-------|-------|-------|-------|-------|
| | Aug | Sep | Oct | Nov | Dec | Jan | Feb | Mar | Apr | May | Jun | Jul | Aug | Sep | Oct | Nov |
| Total Level I Beds | 45 | 45 | 45 | 45 | 45 | 45 | 45 | 45 | 45 | 45 | 45 | 45 | 45 | 45 | 45 | 45 |
| Average Daily Census | 41 | 42 | 43 | 43 | 40 | 39 | 37 | 37 | 33 | 31 | 33 | 34 | 32 | 32 | 32 | 32 |
| Total Level I Admissions this Month | 15 | 12 | 9 | 11 | 7 | 9 | 7 | 7 | 14 | 9 | 18 | 14 | 10 | 10 | 10 | 6 |
| Level 1 Admissions to Non-L1 Units | 5 | 3 | 4 | 6 | 5 | 5 | 2 | 6 | 3 | 3 | 7 | 13 | 8 | 6 | 4 | 3 |
| Total Level 1 Discharges this Month | 13 | 9 | 13 | 10 | 10 | 6 | 13 | 7 | 18 | 10 | 16 | 17 | 9 | 7 | 13 | 4 |
| Highest Census this Month | 41 | 44 | 43 | 43 | 41 | 37 | 37 | 38 | 34 | 32 | 31 | 33 | 29 | 35 | 36 | 33 |
| Over/Under for Total Planned Beds | UNDER | UNDER | UNDER | UNDER | UNDER | UNDER | UNDER | UNDER | UNDER | UNDER | UNDER | UNDER | UNDER | UNDER | UNDER | UNDER |
| BY HOSPITAL | | | | | | | | | | | | | | | | |
| Brattleboro Retreat | | | | | | | | | | | | | | | | |
| Total Level I Beds | 14 | 14 | 14 | 14 | 14 | 14 | 14 | 14 | 14 | 14 | 14 | 14 | 14 | 14 | 14 | 14 |
| Average Daily Census | 20 | 17 | 17 | 17 | 18 | 18 | 17 | 16 | 16 | 16 | 14 | 16 | 17 | 16 | 16 | 14 |
| Total Admissions during Month | 3 | 6 | 2 | 6 | 3 | 3 | 4 | 4 | 9 | 7 | 7 | 9 | 5 | 6 | 4 | 4 |
| Level 1 Admissions to Non-L1 Units | 1 | 3 | 1 | 3 | 1 | 1 | 1 | 4 | 3 | 2 | 2 | 9 | 5 | 3 | 1 | 3 |
| Total Level 1 Discharges this Month | 4 | 1 | 5 | 3 | 2 | 5 | 3 | 3 | 5 | 1 | 7 | 3 | 0 | 0 | 0 | 0 |
| Highest Census this Month | 23 | 21 | 18 | 18 | 19 | 20 | 21 | 18 | 16 | 17 | 15 | 15 | 15 | 18 | 18 | 15 |
| Over/Under for Total Planned Beds | OVER | OVER | OVER | OVER | OVER | OVER | OVER | OVER | OVER | OVER | OVER | OVER | OVER | OVER | OVER | OVER |
| RRMC | | | | | | | | | | | | | | | | |
| Total Level I Beds | 6 | 6 | 6 | 6 | 6 | 6 | 6 | 6 | 6 | 6 | 6 | 6 | 6 | 6 | 6 | 6 |
| Average Daily Census | 10 | 10 | 11 | 11 | 11 | 10 | 8 | 8 | 7 | 6 | 8 | 8 | 6 | 7 | 7 | 6 |
| Total Admissions during Month | 6 | 2 | 4 | 2 | 4 | 2 | 2 | 3 | 3 | 2 | 8 | 4 | 5 | 4 | 4 | 1 |
| Level 1 Admissions to Non-L1 Units | 4 | 0 | 3 | 3 | 4 | 4 | 1 | 2 | 0 | 1 | 5 | 4 | 3 | 3 | 3 | 0 |
| Total Level 1 Discharges this Month | 4 | 1 | 5 | 3 | 2 | 5 | 3 | 3 | 5 | 1 | 7 | 3 | 0 | 0 | 0 | 0 |
| Highest Census this Month | 11 | 12 | 13 | 11 | 10 | 10 | 8 | 8 | 7 | 6 | 7 | 9 | 7 | 8 | 9 | 6 |
| Over/Under for Total Planned Beds | OVER | OVER | OVER | OVER | OVER | OVER | OVER | OVER | OVER | OVER | OVER | OVER | OVER | OVER | OVER | UNDER |
| VPCH | | | | | | | | | | | | | | | | |
| Total Level I Beds | 25 | 25 | 25 | 25 | 25 | 25 | 25 | 25 | 25 | 25 | 25 | 25 | 25 | 25 | 25 | 25 |
| Average Daily Census | 10 | 13 | 13 | 14 | 11 | 10 | 12 | 12 | 11 | 9 | 11 | 10 | 9 | 9 | 9 | 12 |
| Total Admissions during Month | 6 | 4 | 3 | 3 | 0 | 4 | 1 | 0 | 2 | 0 | 3 | 1 | 0 | 0 | 2 | 1 |
| Level 1 Admissions to Non-L1 Units | - | - | - | - | - | - | - | - | - | - | - | - | - | - | - | - |
| Total Level 1 Discharges this Month | 1 | 2 | 3 | 4 | 4 | 1 | 1 | 0 | 4 | 1 | 1 | 3 | 0 | 0 | 0 | 0 |
| Highest Census this Month | 12 | 10 | 14 | 16 | 13 | 10 | 10 | 12 | 12 | 10 | 12 | 11 | 8 | 9 | 11 | 12 |
| Over/Under for Total Planned Beds | UNDER | UNDER | UNDER | UNDER | UNDER | UNDER | UNDER | UNDER | UNDER | UNDER | UNDER | UNDER | UNDER | UNDER | UNDER | UNDER |
| UVM Medical Center | | | | | | | | | | | | | | | | |
| Total Level I Beds | 0 | 0 | 0 | 0 | 0 | 0 | 0 | 0 | 0 | 0 | 0 | 0 | 0 | 0 | 0 | 0 |
| Average Daily Census | 1 | 1 | 1 | 1 | 1 | 1 | 0 | 0 | 0 | 0 | 0 | 0 | 0 | 0 | 0 | 0 |
| Total Admissions during Month | 0 | 0 | 0 | 0 | 0 | 0 | 0 | 0 | 0 | 0 | 0 | 0 | 0 | 0 | 0 | 0 |
| Level 1 Admissions to Non-L1 Units | 0 | 0 | 0 | 0 | 0 | 0 | 0 | 0 | 0 | 0 | 0 | 0 | 0 | 0 | 0 | 0 |
| Total Level 1 Discharges this Month | 0 | 0 | 0 | 0 | 0 | 0 | 1 | 0 | 0 | 0 | 0 | 0 | 0 | 0 | 0 | 0 |
| Highest Census this Month | 1 | 1 | 0 | 0 | 0 | 0 | 0 | 0 | 0 | 0 | 0 | 0 | 0 | 0 | 0 | 0 |
| Over/Under for Total Planned Beds | OVER | OVER | OVER | OVER | OVER | OVER | N/A | N/A | N/A | N/A | N/A | N/A | N/A | N/A | N/A | N/A |

Analysis is based on the Inpatient Tracking Spreadsheet maintained by the Department of Vermont Health Access (DVHA). Includes psychiatric hospitalizations with Level 1 Designations for hospitalizations occurring at adult inpatient psychiatric units. Level 1 designation is reserved for patients with risk of imminent harm to self or others and requiring significant resources. 'Over/Under for Total Planned Beds' is computed using the difference between total level 1 beds and average daily census for each hospital and statewide. Unit of admission is available from June 2013 onward.

Level 1 Inpatient Capacity Utilization Statewide and by Hospital (Part 2 of 2)

Level 1 Inpatient Capacity and Utilization Vermont Statewide



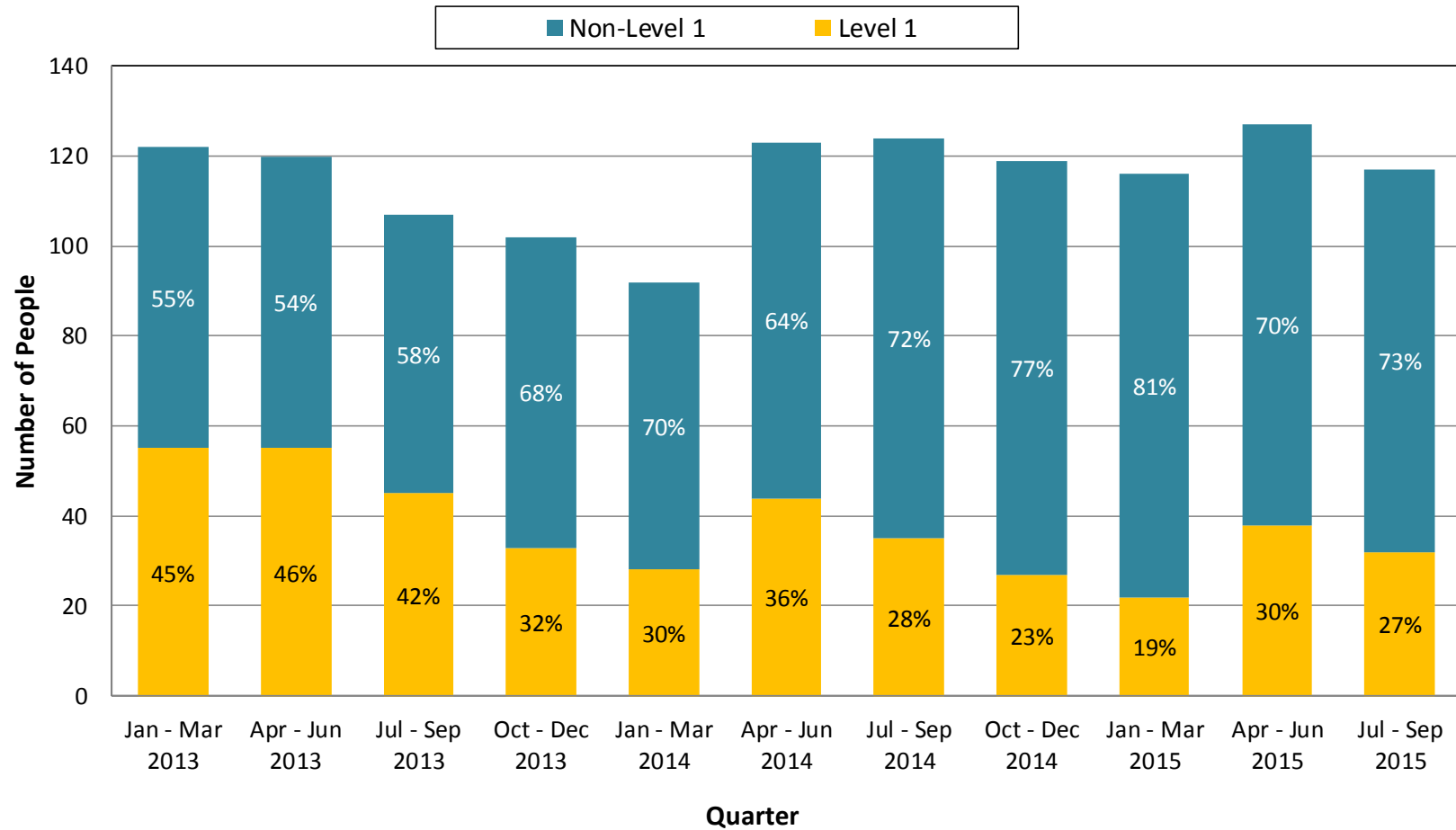
GMPCC opened 8 Level 1 beds in January 2013

RRMC opened 6 Level 1 beds in April 2013

Analysis is based on the Inpatient Tracking Spreadsheet maintained by the Department of Vermont Health Access (DVHA). Includes psychiatric hospitalizations with Level 1 Designations for hospitalizations occurring at adult inpatient psychiatric units. Level 1 designation is reserved for patients with risk of imminent harm to self or others and requiring significant resources.

People with Involuntary Admissions, Comparison of Level 1 and Non-Level 1 (Jan 2013- Sep 2015)

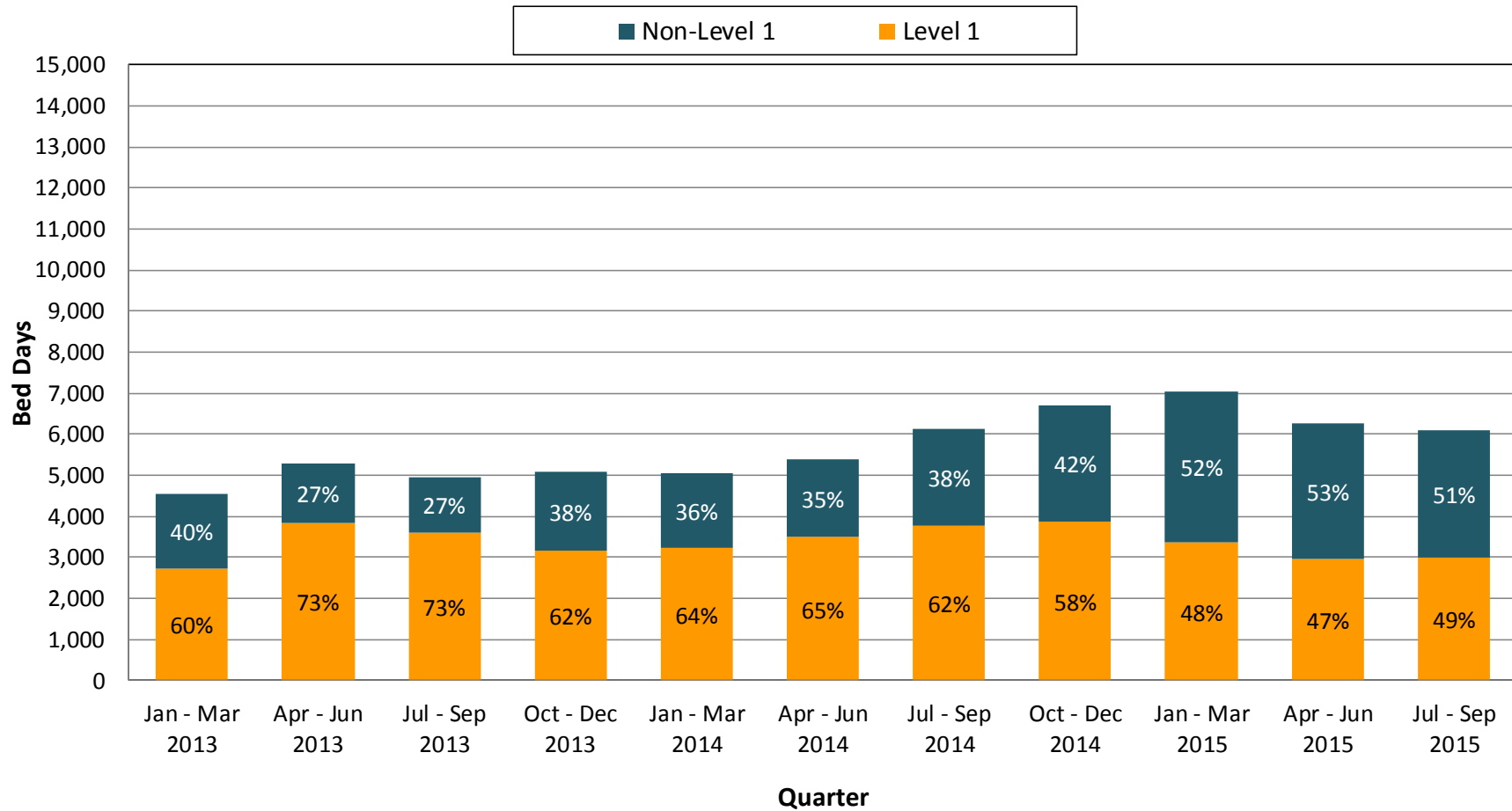
People with Involuntary Admissions Comparison Level 1 and Non-Level 1



Analysis is based on the Inpatient Tracking Spreadsheet maintained by the Department of Vermont Health Access (DVHA) for psychiatric hospitalizations with Level 1 Designations, and adult inpatient psychiatric tracking spreadsheet maintained by the Department of Mental Health (DMH), Care Management Unit. Level 1 designation is reserved for patients with risk of imminent harm to self or others and requiring significant resources.

Involuntary Non-Level 1 and Level 1 bed days (Jan 2013 – Sep 2015)

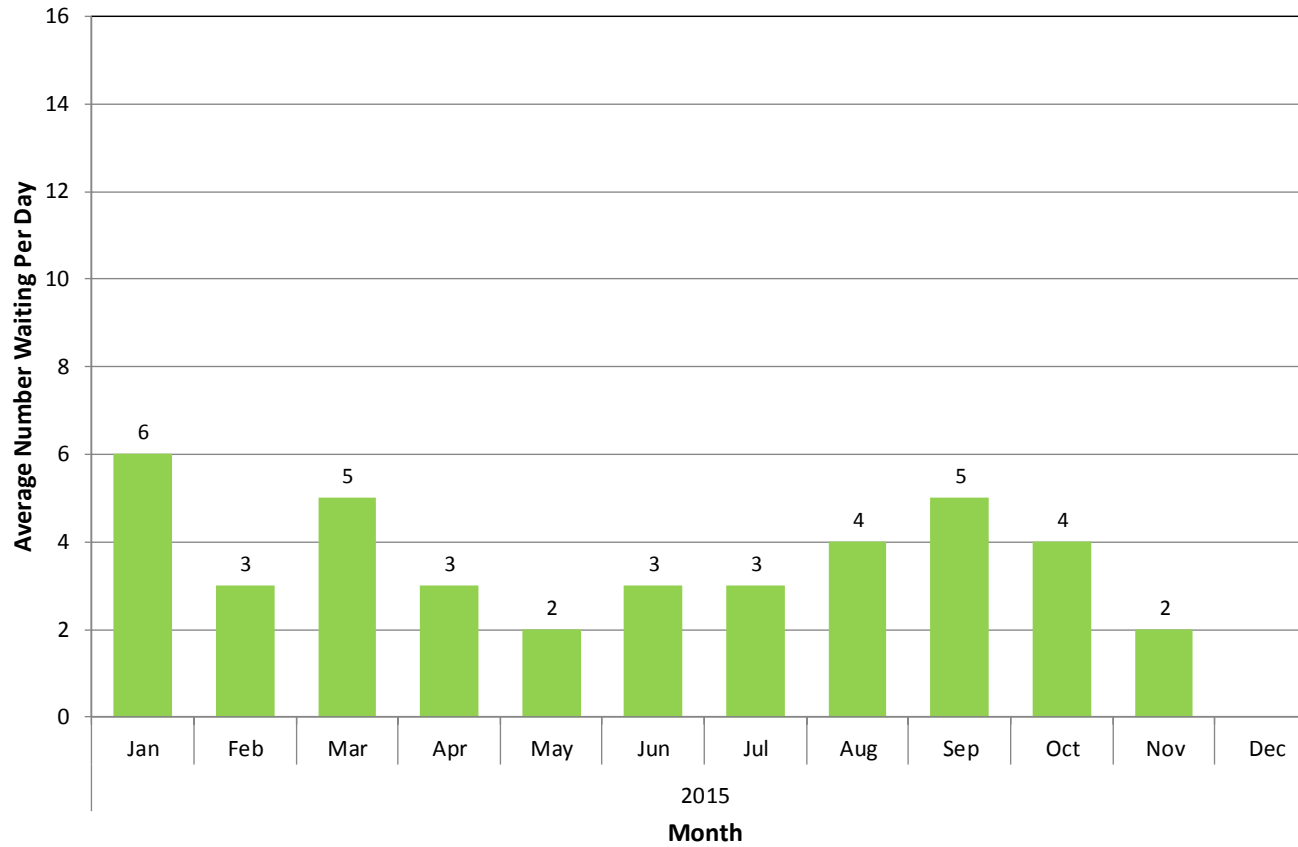
People with Involuntary Admissions: Bed Days Comparison Level 1 and Non-Level 1



Analysis is based on the Inpatient Tracking Spreadsheet maintained by the Department of Vermont Health Access (DVHA) for psychiatric hospitalizations with Level 1 Designations, and adult inpatient psychiatric tracking spreadsheet maintained by the Department of Mental Health (DMH), Care Management Unit. Level 1 designation is reserved for patients with risk of imminent harm to self or others and requiring significant resources. Bed days for Level 1 stays can include inpatient days before the Level 1 determination was made due to the payment structure of Level 1 inpatient stays.

Average Numbers of People Waiting Inpatient Placement (2015)

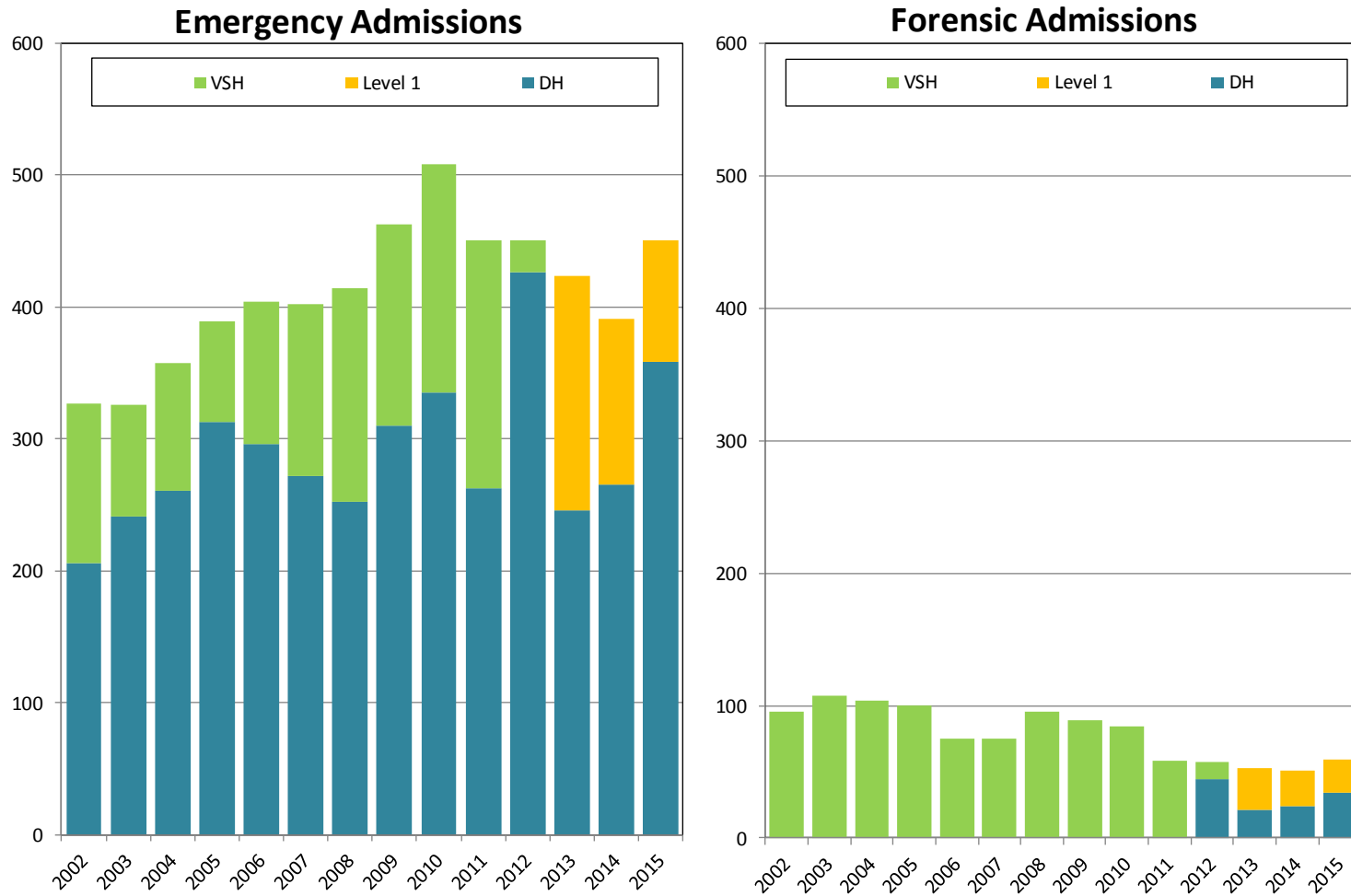
**Average Numbers of People Waiting Inpatient Placement
(Adult Emergency Exams, Warrants, and Forensic Observations Only)
2015**



Based on the VPCH admissions unit's morning update report and end-of-shift reports regarding persons waiting inpatient placement. Includes adults waiting in emergency departments for inpatient placement and adults waiting in department of corrections for inpatient placement on a court ordered forensic observation.

Vermont State Hospital and Designated Hospitals, Emergency and Forensic Admissions (FY2002-2015)

**Vermont State Hospital and Designated Hospitals
Emergency and Forensic Admissions
FY2002-FY2015**



Analysis based on the Vermont State Hospital (VSH) Treatment Episode Database, and adult inpatient tracking maintained by the Department of Mental Health, Care Management Unit. Includes all admissions during FY2002 - FY2015 with a forensic legal status or emergency legal status at admission.

Adult Inpatient Utilization and Bed Closures: Page 1 of 2

System Total and Level 1 Units 2015

| | | |
|--|---|---|
| All Units | Level 1 Units | Non-Level 1 Adult Units |
|--|---|---|

| | Jan | Feb | Mar | Apr | May | Jun | Jul | Aug | Sep | Oct | Nov | Dec |
|----------------------------------|------|------|------|-----|------|------|-----|------|-----|------|-----|-----|
| ADULT INPATIENT UNITS | | | | | | | | | | | | |
| Total Beds | 188 | 188 | 188 | 188 | 188 | 188 | 188 | 188 | 188 | 188 | 188 | 188 |
| Average Daily Census | 164 | 164 | 174 | 170 | 165 | 163 | 163 | 161 | 165 | 160 | 161 | |
| Percent Occupancy | 87% | 87% | 92% | 90% | 88% | 87% | 87% | 85% | 88% | 85% | 86% | |
| # Days at Occupancy | 0 | 0 | 0 | 0 | 0 | 0 | 0 | 0 | 0 | 0 | 0 | |
| # Days with Closed Beds | 31 | 28 | 31 | 23 | 30 | 29 | 31 | 31 | 30 | 31 | 27 | |
| Average # of Closed Beds | 8 | 7 | 4 | 3 | 3 | 3 | 4 | 10 | 5 | 4 | 2 | |
| VPCH | | | | | | | | | | | | |
| Total Beds | 25 | 25 | 25 | 25 | 25 | 25 | 25 | 25 | 25 | 25 | 25 | 25 |
| Average Daily Census | 21 | 24 | 25 | 23 | 22 | 22 | 20 | 17 | 18 | 21 | 22 | |
| Percent Occupancy | 84% | 97% | 100% | 93% | 87% | 89% | 81% | 68% | 74% | 83% | 89% | |
| # Days at Occupancy | 0 | 15 | 31 | 4 | 0 | 0 | 0 | 0 | 0 | 0 | 0 | |
| # Days with Closed Beds | 31 | 17 | 0 | 11 | 19 | 6 | 31 | 31 | 30 | 31 | 12 | |
| Average # of Closed Beds | 4 | 2 | - | 3 | 3 | 2 | 3 | 8 | 4 | 3 | 2 | |
| BR TYLER 4 | | | | | | | | | | | | |
| Total Beds | 14 | 14 | 14 | 14 | 14 | 14 | 14 | 14 | 14 | 14 | 14 | 14 |
| Average Daily Census | 14 | 14 | 14 | 14 | 14 | 14 | 13 | 14 | 14 | 14 | 13 | |
| Percent Occupancy | 100% | 100% | 100% | 98% | 100% | 100% | 96% | 99% | 99% | 100% | 95% | |
| # Days at Occupancy | 31 | 28 | 31 | 24 | 31 | 29 | 16 | 26 | 27 | 29 | 12 | |
| # Days with Closed Beds | 0 | 0 | 0 | 0 | 0 | 0 | 13 | 2 | 0 | 0 | 12 | |
| Average # of Closed Beds | - | - | - | - | - | - | 1 | 1 | - | - | 1 | |
| RRMC SOUTH WING | | | | | | | | | | | | |
| Total Beds | 6 | 6 | 6 | 6 | 6 | 6 | 6 | 6 | 6 | 6 | 6 | 6 |
| Average Daily Census | 6 | 6 | 6 | 6 | 6 | 6 | 6 | 6 | 6 | 6 | 6 | 6 |
| Percent Occupancy | 100% | 100% | 100% | 99% | 100% | 97% | 98% | 100% | 98% | 99% | 99% | |
| # Days at Occupancy | 31 | 28 | 31 | 29 | 31 | 24 | 27 | 31 | 27 | 30 | 29 | |
| # Days with Closed Beds | 0 | 0 | 0 | 3 | 0 | 4 | 0 | 0 | 2 | 2 | 0 | |
| Average # of Closed Beds | - | - | - | - | - | - | - | - | 1 | 1 | - | |
| Wait Times for Beds | | | | | | | | | | | | |
| Average # People Waiting per Day | 6 | 3 | 5 | 3 | 2 | 3 | 3 | 4 | 5 | 4 | 2 | |

Based on data reported to the Vermont Department of Mental Health (DMH) by designated hospitals (DH) for adult inpatient care using the electronic bed boards system. Beds at inpatient settings can be closed based on the clinical decision of the director of each inpatient unit. Average number of people waiting per day is determined using the morning inpatient update and wait times in days are based upon data maintained by the VPCH admissions department that is submitted by crisis, designated agency, and hospital screeners.

Adult Inpatient Utilization and Bed Closures: Page 2 of 2

**System Total and Non-Level 1 Units
2015**

| | | |
|---|---|--|
| All Units | Level 1 Units | Non-Level 1 Adult Units |
|---|---|--|

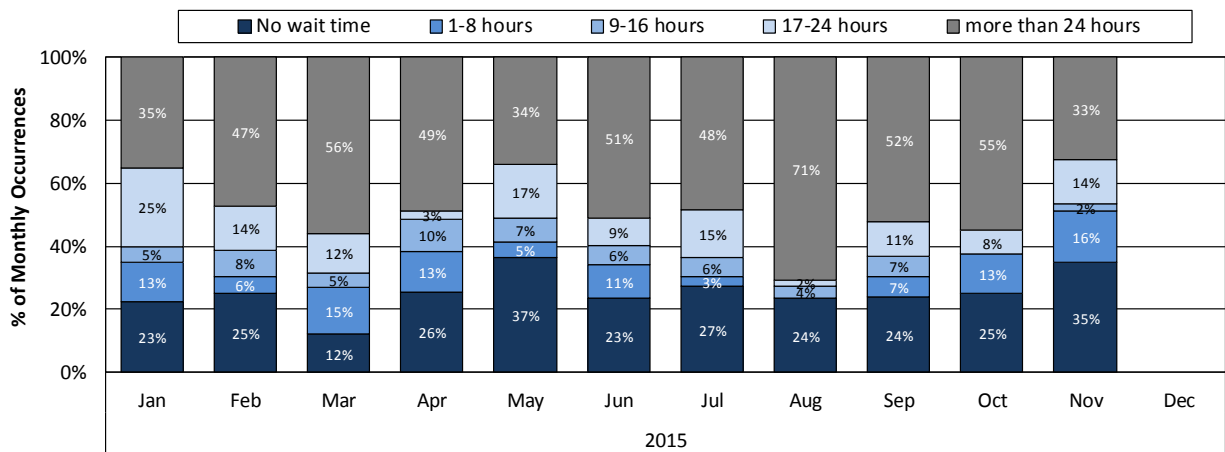
| | Jan | Feb | Mar | Apr | May | Jun | Jul | Aug | Sep | Oct | Nov | Dec |
|----------------------------------|-----|-----|-----|-----|-----|-----|-----|-----|-----|-----|-----|-----|
| ADULT INPATIENT UNITS | | | | | | | | | | | | |
| Total Beds | 188 | 188 | 188 | 188 | 188 | 188 | 188 | 188 | 188 | 188 | 188 | |
| Average Daily Census | 164 | 164 | 174 | 170 | 165 | 163 | 163 | 161 | 165 | 160 | 161 | |
| Percent Occupancy | 87% | 87% | 92% | 90% | 88% | 87% | 87% | 85% | 88% | 85% | 86% | |
| # Days at Occupancy | 0 | 0 | 0 | 0 | 0 | 0 | 0 | 0 | 0 | 0 | 0 | |
| # Days with Closed Beds | 31 | 28 | 31 | 23 | 30 | 29 | 31 | 31 | 30 | 31 | 27 | |
| Average # of Closed Beds | 8 | 7 | 4 | 3 | 3 | 3 | 4 | 10 | 5 | 4 | 2 | |
| CVMC | | | | | | | | | | | | |
| Total Beds | 14 | 14 | 14 | 14 | 14 | 14 | 14 | 14 | 14 | 14 | 14 | |
| Average Daily Census | 11 | 11 | 13 | 12 | 12 | 11 | 11 | 11 | 13 | 11 | 12 | |
| Percent Occupancy | 76% | 81% | 90% | 86% | 82% | 75% | 77% | 80% | 90% | 80% | 87% | |
| # Days at Occupancy | 2 | 7 | 4 | 4 | 4 | 0 | 1 | 0 | 5 | 1 | 10 | |
| # Days with Closed Beds | 0 | 2 | 3 | 0 | 3 | 6 | 2 | 0 | 0 | 0 | 0 | |
| Average # of Closed Beds | - | 2 | 1 | - | 2 | 1 | 2 | - | - | - | - | |
| FAHC | | | | | | | | | | | | |
| Total Beds | 27 | 27 | 27 | 27 | 27 | 27 | 27 | 27 | 27 | 27 | 27 | |
| Average Daily Census | 25 | 22 | 23 | 19 | 20 | 19 | 19 | 22 | 25 | 22 | 22 | |
| Percent Occupancy | 92% | 81% | 85% | 70% | 75% | 71% | 71% | 81% | 94% | 83% | 82% | |
| # Days at Occupancy | 0 | 0 | 0 | 0 | 0 | 0 | 0 | 0 | 11 | 0 | 0 | |
| # Days with Closed Beds | 1 | 19 | 12 | 0 | 5 | 3 | 2 | 25 | 2 | 7 | 7 | |
| Average # of Closed Beds | 2 | 1 | 1 | - | 1 | 1 | 1 | 2 | 1 | 1 | 1 | |
| BR (NON LEVEL 1 UNITS) | | | | | | | | | | | | |
| Total Beds | 75 | 75 | 75 | 75 | 75 | 75 | 75 | 75 | 75 | 75 | 75 | |
| Average Daily Census | 65 | 65 | 69 | 73 | 70 | 70 | 70 | 68 | 67 | 68 | 65 | |
| Percent Occupancy | 86% | 86% | 92% | 97% | 93% | 93% | 94% | 91% | 90% | 90% | 87% | |
| # Days at Occupancy | 0 | 0 | 0 | 6 | 2 | 1 | 4 | 0 | 1 | 0 | 0 | |
| # Days with Closed Beds | 30 | 28 | 31 | 17 | 20 | 28 | 2 | 13 | 16 | 8 | 5 | |
| Average # of Closed Beds | 3 | 5 | 3 | 2 | 1 | 2 | 2 | 1 | 1 | 1 | 1 | |
| RRMC GEN PSYCH | | | | | | | | | | | | |
| Total Beds | 17 | 17 | 17 | 17 | 17 | 17 | 17 | 17 | 17 | 17 | 17 | |
| Average Daily Census | 16 | 16 | 16 | 15 | 14 | 16 | 15 | 16 | 16 | 15 | 17 | |
| Percent Occupancy | 92% | 92% | 93% | 90% | 81% | 94% | 90% | 97% | 92% | 86% | 97% | |
| # Days at Occupancy | 9 | 5 | 12 | 11 | 5 | 9 | 9 | 19 | 11 | 3 | 21 | |
| # Days with Closed Beds | 9 | 4 | 0 | 0 | 1 | 8 | 6 | 6 | 7 | 7 | 0 | |
| Average # of Closed Beds | 1 | 1 | - | - | 1 | 2 | 1 | 1 | 1 | 3 | - | |
| WC | | | | | | | | | | | | |
| Total Beds | 10 | 10 | 10 | 10 | 10 | 10 | 10 | 10 | 10 | 10 | 10 | |
| Average Daily Census | 7 | 8 | 9 | 8 | 8 | 8 | 8 | 8 | 6 | 6 | 6 | |
| Percent Occupancy | 74% | 79% | 85% | 77% | 78% | 75% | 77% | 76% | 63% | 58% | 63% | |
| # Days at Occupancy | 0 | 6 | 11 | 5 | 8 | 3 | 5 | 3 | 0 | 0 | 2 | |
| # Days with Closed Beds | 6 | 6 | 5 | 2 | 1 | 0 | 0 | 0 | 0 | 0 | 0 | |
| Average # of Closed Beds | 2 | 1 | 2 | 1 | 1 | - | - | - | - | - | - | |
| Wait Times for Beds | | | | | | | | | | | | |
| Average # People Waiting per Day | 6 | 3 | 5 | 3 | 2 | 3 | 3 | 4 | 5 | 4 | 2 | |

Based on data reported to the Vermont Department of Mental Health (DMH) by designated hospitals (DH) for adult inpatient care using the electronic bed boards system. Beds at inpatient settings can be closed based on the clinical decision of the director of each inpatient unit. Average number of people waiting per day is determined using the morning inpatient update and wait times in days are based upon data maintained by the VPCH admissions department that is submitted by crisis, designated agency, and hospital screeners.

Wait Times in Hours for Involuntary Inpatient Admission (2015)

Emergency Exams and Warrants, and Court Ordered Forensic Observations

Wait Times in Hours for Involuntary Inpatient Admission CY15



| | | 2015 | | | | | | | | | | | |
|---------------------------|---------------|-----------|-----------|-----------|-----------|-----------|-----------|-----------|-----------|-----------|-----------|-----------|-----|
| Wait time | | Jan | Feb | Mar | Apr | May | Jun | Jul | Aug | Sep | Oct | Nov | Dec |
| No wait time | | 9 | 9 | 5 | 10 | 15 | 11 | 9 | 12 | 11 | 10 | 15 | |
| 1-8 hours | | 5 | 2 | 6 | 5 | 2 | 5 | 1 | 0 | 3 | 5 | 7 | |
| 9-16 hours | | 2 | 3 | 2 | 4 | 3 | 3 | 2 | 2 | 3 | 0 | 1 | |
| 17-24 hours | | 10 | 5 | 5 | 1 | 7 | 4 | 5 | 1 | 5 | 3 | 6 | |
| more than 24 hours | | 14 | 17 | 23 | 19 | 14 | 24 | 16 | 36 | 24 | 22 | 14 | |
| Total | | 40 | 36 | 41 | 39 | 41 | 47 | 33 | 51 | 46 | 40 | 43 | |
| Wait Time in Hours | | | | | | | | | | | | | |
| EEs/Wrts | Mean | 47 | 40 | 46 | 31 | 27 | 33 | 47 | 47 | 46 | 39 | 19 | |
| | Median | 18 | 18 | 25 | 18 | 17 | 24 | 23 | 32 | 22 | 28 | 7 | |
| OBS | Mean | 442 | 102 | 155 | 35 | 20 | 75 | 123 | 194 | 122 | 36 | 19 | |
| | Median | 442 | 100 | 167 | 33 | 5 | 75 | 123 | 196 | 96 | 2 | 13 | |
| Total | Mean | 67 | 56 | 54 | 31 | 26 | 34 | 49 | 64 | 56 | 38 | 19 | |
| | Median | 19 | 23 | 27 | 22 | 17 | 25 | 24 | 41 | 25 | 28 | 7 | |

Analysis conducted by the Vermont Department of Mental Health Research & Statistics Unit.
 Analysis based on data maintained by the VPCH admissions department from paperwork submitted by crisis, designated agency, and hospital screeners. Wait times are defined from determination of need to admission to disposition, less time for medical clearance, for persons on warrant for immediate examination, applications for emergency exam, and court ordered forensic observations, waiting for inpatient admission. Wait times are point in time and are categorized based on month of service, not month of disposition, for clients who had a disposition to a psychiatric inpatient unit.

Examination of Wait Times

A majority of individuals who are awaiting placements to inpatient hospital beds are placed within 48 hours of entering the Emergency Departments (EDs) across the state. The total number of available beds was increased on July 2, 2014 with the opening of the Vermont Psychiatric Care Hospital. Nearly one fifth of individuals who are held on emergency exams or warrants, and 23% of people waiting in EDs, have zero wait time before inpatient bed placement.

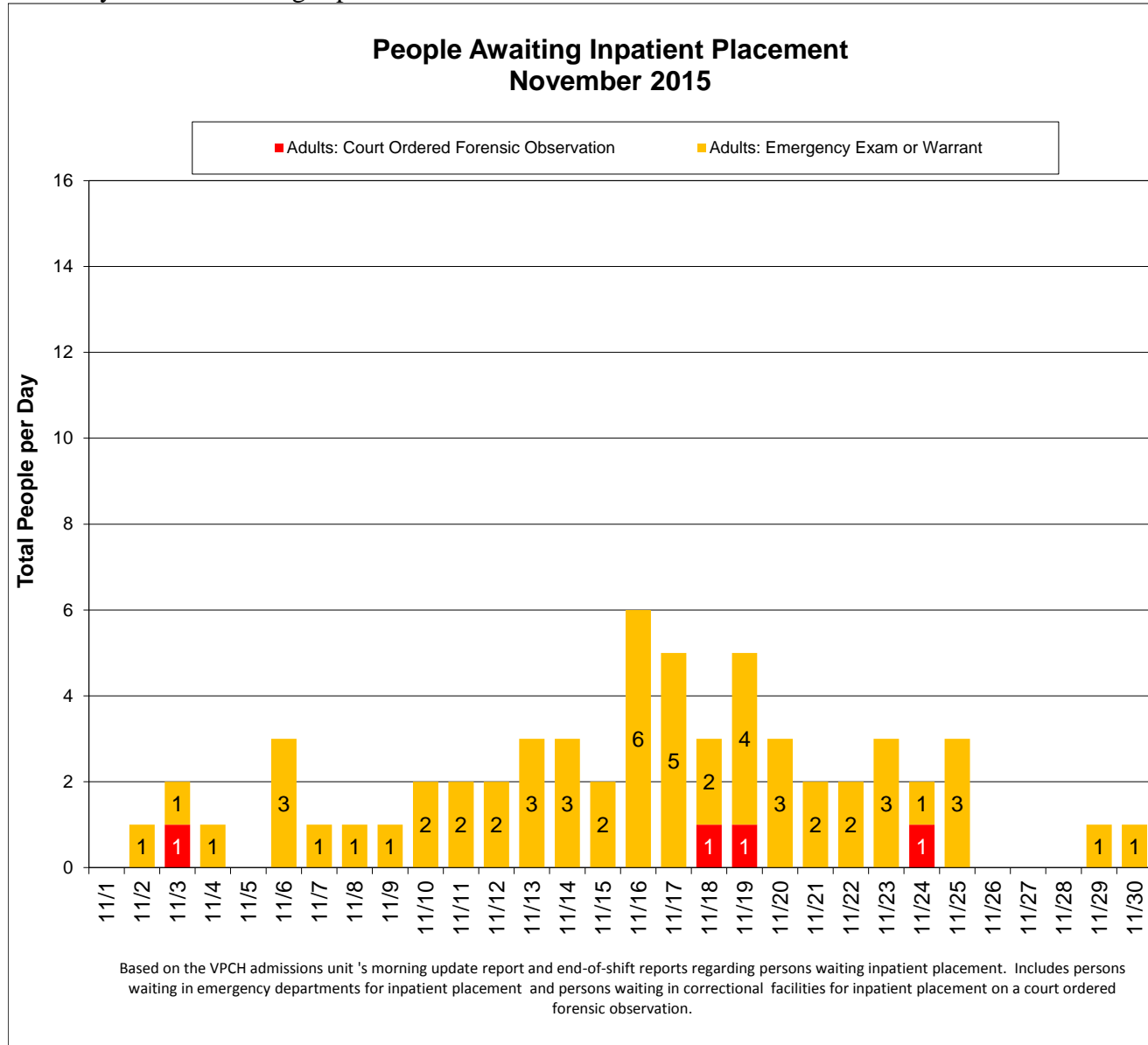
When taking a closer look at the populations of individuals who wait for bed placements, there are certain patients moving towards placement sooner than others. For example, youth generally have an average wait of less than 24 hours since July 2014, compared to approximately 33 hours for the first six months of the year. During portions of November and December, BR's children's unit was only operating at 57%-67% capacity at times due to bed closures which partially attributed to longer wait time than normal for youth. Adults held under EEs and Warrants have a markedly higher average wait time as compared to youth.

These longer wait times do not reflect a system-wide experience; it is heavily skewed by a small number of individuals who wait much longer than others in their cohort. This is due to a variety of circumstances such as bed closures due to unit acuity, no bed being readily available, or due to the acuity of the person waiting. As a historical example, October 2014 saw 41 individuals awaiting placements under an EE/Warrant for an average wait time of 44 hours. Included in this figure were two individuals with a combined average wait time of 10 days. When these two individuals were removed from the analysis, the remaining 39 individuals had an average wait time of 24 hours – approximately a 50% reduction in time.

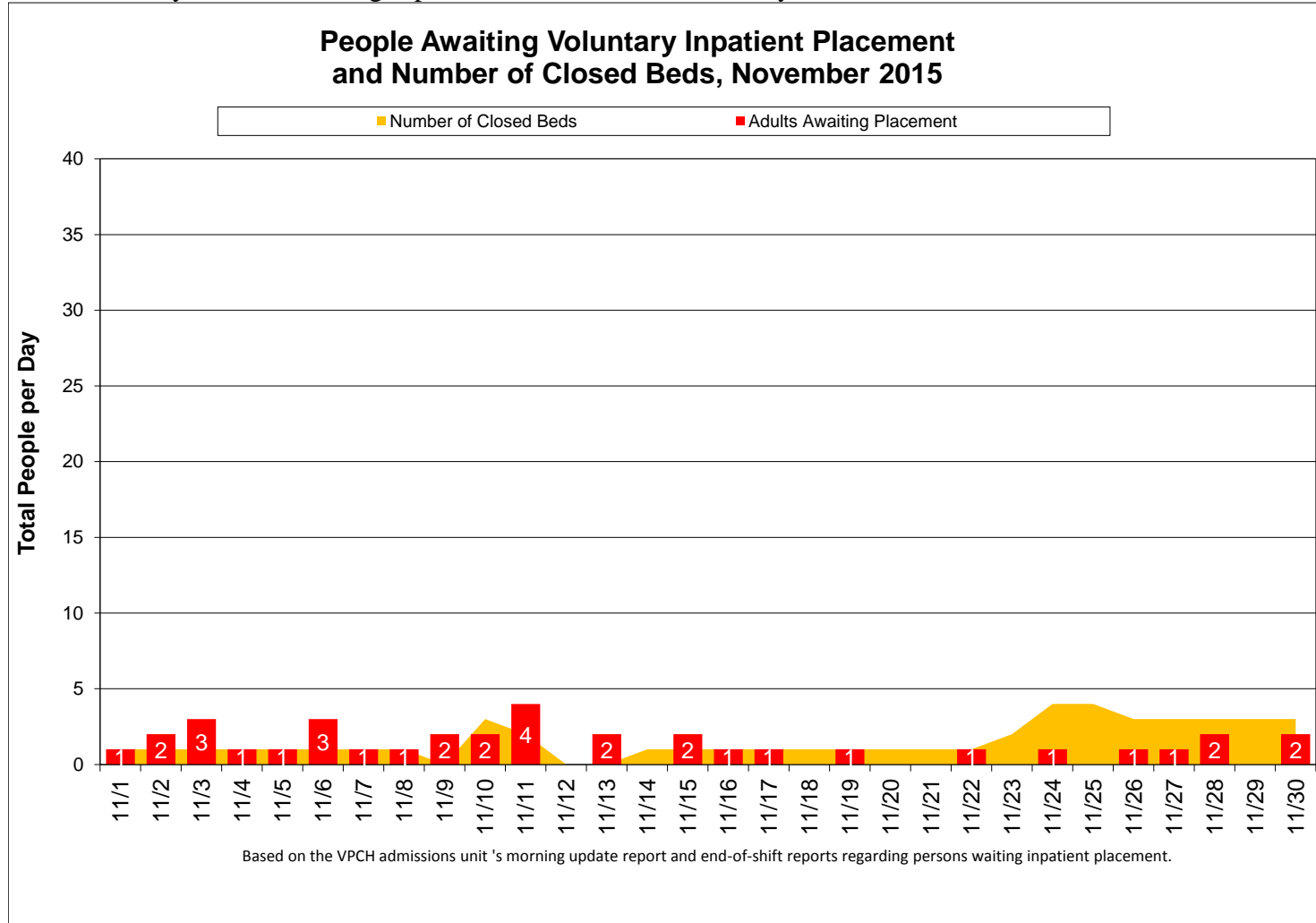
Beginning January 2015, the reporting of ED wait times focused primarily on adults in the care and custody of the Commissioner who are held on EE/warrants or being held for forensic observation due to the unique circumstances involved with placements of Level 1 and individuals involved with the courts. Individuals experiencing longer wait times have complicating factors that are systemic (need for Level 1 bed and significant medical complications) as well as individual (comorbid issues with dementia, TBI, med refusals, etc.). Our goal continues to be placing individuals in appropriate beds as soon as they are available and patient acuity is appropriate for the inpatient placement.

DMH has a cadre of experienced care managers (Care Management Team), who work with each of the Designated Hospitals, the Designated Agencies Emergency Services teams, and the hospital Emergency Departments statewide. Their function is to work with individual cases and the relevant action systems, to move people needing care through the system. The system is comprised of several points along a continuum which represent appropriate levels of care. Since our acute mental health treatment system became decentralized, placement considerations have become more complex. A significant reason for this lack of accessibility is due to some number of these beds being utilized by longer term patients, who either need longer treatment stays due to their acuity or for whom community based placements are difficult to organize and staff. The Care Management Team also works on longer term planning for these individuals, monitoring availability of placements in various levels of community care across the state.

Daily Number of Involuntary Adults Awaiting Inpatient Placement



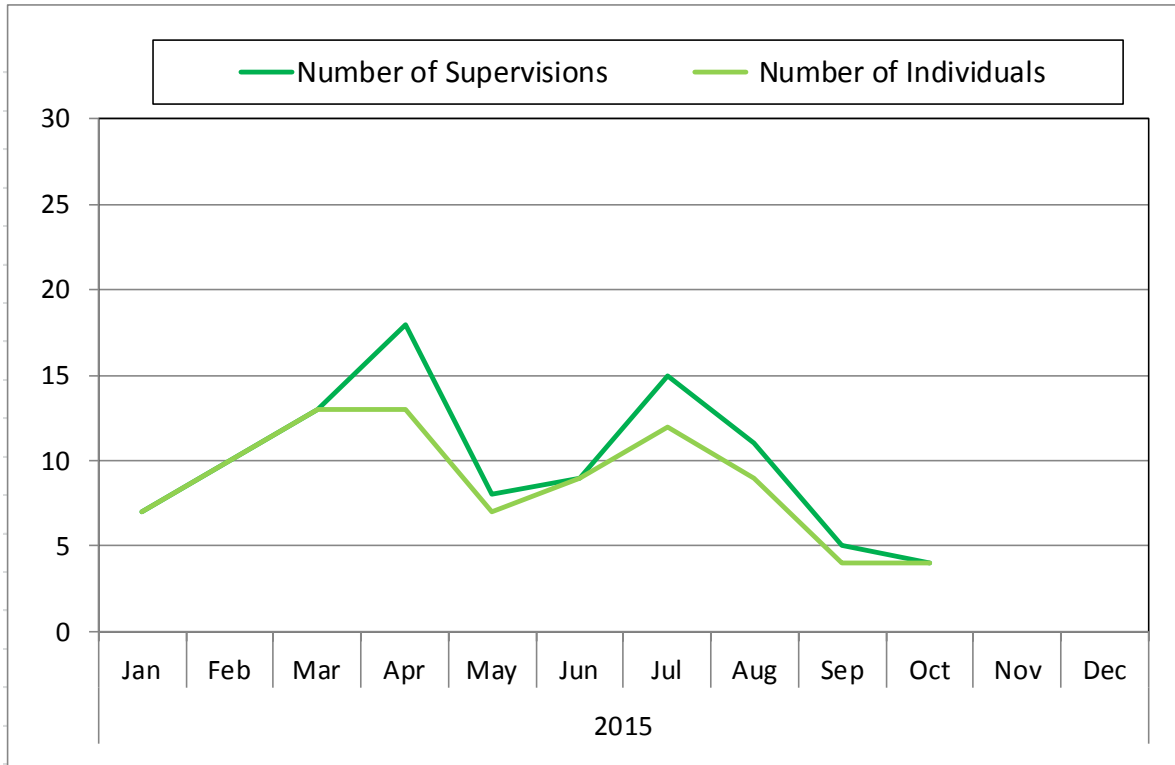
Daily Number of Voluntary Adults Awaiting Inpatient Placement and Closed System Beds



Additional Reporting Requests

Sheriff Supervisions in Emergency Departments (2015)

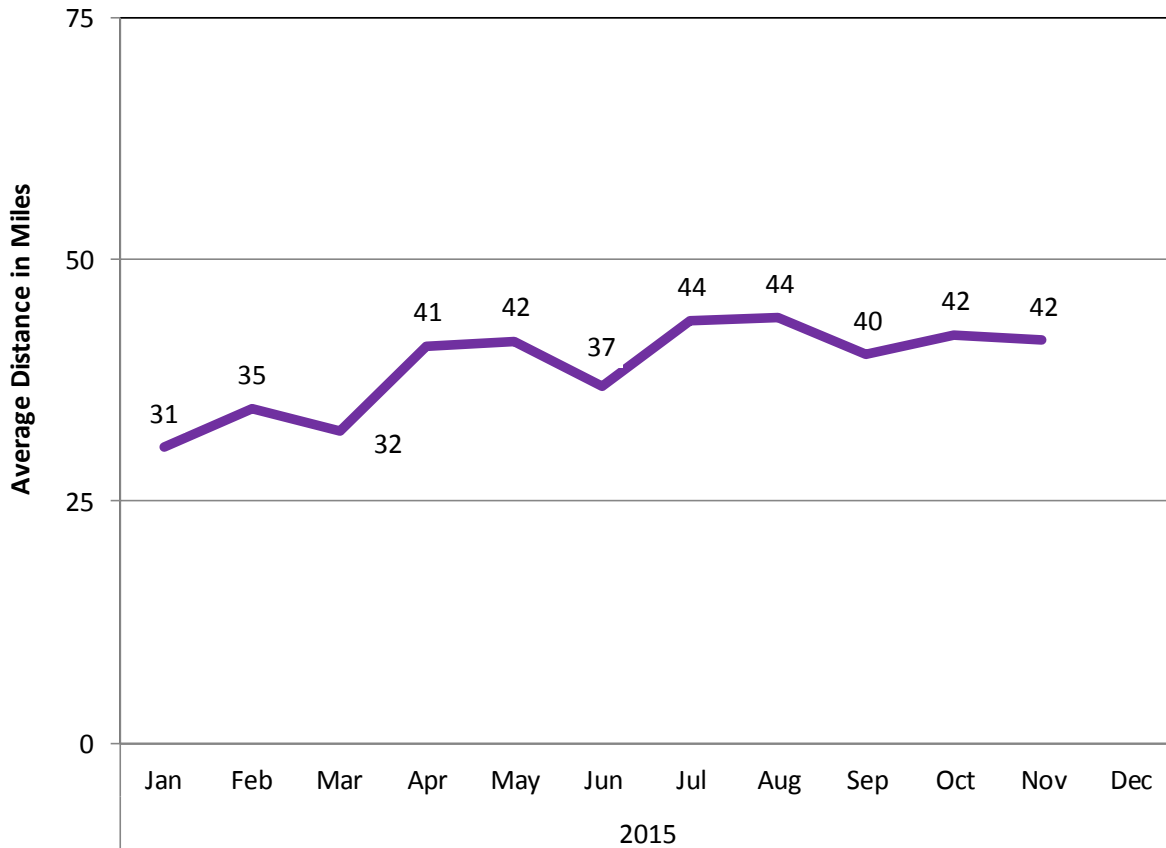
Sheriff Supervisions in Emergency Departments 2015



Based on sheriff supervision invoices received by the Department of Mental Health Business Office for supervision of individuals in emergency departments.

Average Distance to Psychiatric Inpatient Care (2015)

**Average Distance to Psychiatric Inpatient Care
From Home to Designated Hospital for Involuntary Stays
2015**



**Month of Admission
2015**

| | Jan | Feb | Mar | Apr | May | Jun | Jul | Aug | Sep | Oct | Nov | Dec |
|------------------------------|-----|-----|-----|-----|-----|-----|-----|-----|-----|-----|-----|-----|
| Total Cases* | 35 | 32 | 40 | 39 | 40 | 47 | 29 | 44 | 42 | 41 | 40 | |
| Average Distance in Miles | 31 | 35 | 32 | 41 | 42 | 37 | 44 | 44 | 40 | 42 | 42 | |

Analysis based on data maintained by the VPCH admissions department from paperwork submitted by crisis, designated agency, and hospital screeners for adults admitted to involuntary inpatient care at Designated Hospitals.

*Total cases includes persons admitted involuntarily to psychiatric inpatient units, but may also include patients who convert to voluntary upon arrival to the unit. Cases and averages exclude patients with no residency information and patients reported as residing out of state.

Hospital Admissions, Length of Stay, and Readmissions

Adult Involuntary Inpatient Utilization: Statewide

| SYSTEM TOTAL | 2014 | | | | | | 2015 | | | | | | | | | |
|--|------|------|------|------|------|------|------|------|------|------|------|------|------|------|------|------|
| | Jul | Aug | Sep | Oct | Nov | Dec | Jan | Feb | Mar | Apr | May | Jun | Jul | Aug | Sep | Oct |
| Total Admissions this Month | 46 | 43 | 42 | 50 | 39 | 34 | 42 | 38 | 42 | 42 | 43 | 52 | 30 | 46 | 48 | 42 |
| Total Discharges this Month* | 41 | 47 | 39 | 44 | 38 | 36 | 33 | 37 | 41 | 62 | 43 | 38 | 43 | 42 | 47 | 43 |
| Length of Stay for Discharged Clients* | 27.9 | 26.6 | 58.1 | 58.1 | 43.9 | 61.1 | 35.7 | 71.6 | 37.9 | 54.8 | 42.9 | 55.4 | 40.1 | 34.0 | 49.0 | 73.7 |
| 30 Day Readmission Rate* | 10% | 4% | 10% | 9% | 3% | 8% | 12% | 11% | 15% | 10% | 16% | 5% | 7% | 10% | 6% | 5% |

Analysis is based on the adult inpatient psychiatric tracking spreadsheet maintained by the Department of Mental Health (DMH), Care Management Unit.

* Administrative staff and care managers at the Department are working to complete data records. While a majority of FY2014 records are entered, staff are still working to close out records with discharge dates. Once all records for FY2014 are resolved, the Department will be able to report length of stay and 30 day readmission rates as requested.

This request has been updated from last month's report to include the Department's progress in entering involuntary admissions events into our data collection spreadsheet. Currently, there are approximately 85 records without discharge dates, which accurately reflect the number of involuntary patients receiving inpatient care. DMH Care Managers are in the process of following up with hospitals to collect missing discharge dates and are revisiting the process for data collection.

Data collection regarding involuntary admissions is a multi-unit manual effort at present. Data for involuntary admissions are collected by the Department's Care Management Unit with assistance from administrative staff. At the beginning of each month, the Research and Statistics Unit provides Care Management with data collected on screenings for inpatient hospitalization. Care management reviews this list and adds records that may have been missed. Care management then coordinates with Utilization Review to capture Level 1 status for each patient. Data for inpatient stays typically takes two months to capture (i.e. August data completed in October). This delay represents Department efforts to audit the data collection and spreadsheet entries for completeness and accuracy. This delay also allows the Department to collect as many discharge dates as possible, since the median length of stay for inpatient psychiatric care is 14 days.

Vermont Department of Mental Health System Snapshot (2012-2015)



Vermont Department of Mental Health
System Snapshot (December 15, 2015)

*data forthcoming

2015

| Reporting Category | FY15 Q3 | | | FY15 Q4 | | | FY16 Q1 | | | FY16 Q2 | | |
|---|---------|---------|------|---------|---------|-----|---------|------|-----|---------|-----|-----|
| | Jan | Feb | Mar | Apr | May | Jun | Jul | Aug | Sep | Oct | Nov | Dec |
| Adult Inpatient Hospital | | | | | | | | | | | | |
| % Occupancy | 87% | 87% | 92% | 90% | 88% | 88% | 86% | 85% | 88% | 79% | 81% | |
| Avg. Daily Census | 164 | 164 | 174 | 168 | 165 | 165 | 157 | 161 | 165 | 165 | 145 | |
| % Occupancy at No Refusal Units | 91% | 98% | 100% | 95% | 93% | 93% | 89% | 88% | 85% | 91% | 92% | |
| Avg. Daily Census | 41 | 44 | 45 | 43 | 42 | 42 | 30 | 40 | 38 | 41 | 42 | |
| Adult Crisis Beds | | | | | | | | | | | | |
| % Occupancy | 81% | 76% | 81% | 81% | 74% | 71% | 75% | 72% | 78% | 76% | 75% | |
| Avg. Daily Census | 32 | 30 | 33 | 33 | 30 | 29 | 30 | 29 | 31 | 30 | 30 | |
| Applications for Involuntary Hospitalizations (EE) | | | | | | | | | | | | |
| Youth (0-17) | 8 | 6 | 3 | 9 | 7 | 0 | 3 | 2 | 7 | 6 | 9 | |
| Adults | 48 | 32 | 44 | 48 | 41 | 52 | 41 | 50 | 46 | 39 | 46 | |
| Total adults admitted with CRT Designation (% of Total applications) | 17 | 12 | 9 | 14 | 14 | 19 | 14 | 15 | 9 | 14 | 11 | |
| | 35% | 38% | 20% | 29% | 34% | 37% | 34% | 30% | 20% | 36% | 24% | |
| Total Level 1 Admissions | 9 | 7 | 7 | 14 | 9 | 7 | 13 | 8 | 10 | 10 | 6 | |
| Instances when Placement Unavailable & Adult Client Held in ED | | | | | | | | | | | | |
| | 29 | 19 | 18 | 22 | 25 | 30 | 22 | 35 | 30 | 28 | 24 | |
| Adult Involuntary Medications | | | | | | | | | | | | |
| # Applications | 4 | 12 | 6 | 5 | 3 | 5 | 11 | 3 | 5 | 11 | 5 | |
| # Granted Orders | 1 | 10 | 4 | 3 | 2 | 3 | 8 | 2 | 5 | 9 | 3 | |
| Mean time from filing date to decision date (days) | 12 | 12 | 20 | 8 | 11 | 11 | 9 | 12 | 12 | 16 | 10 | |
| Court Ordered Forensic Observation Screenings | | | | | | | | | | | | |
| # Requested | 3 | 15 | 8 | 8 | 7 | 5 | 4 | 9 | 7 | 14 | 8 | |
| # Inpatient Ordered | 2 | 10 | 4 | 3 | 3 | 2 | 1 | 5 | 5 | 5 | 4 | |
| VT Resident Suicides | | | | | | | | | | | | |
| Youth (0-17) | | | | | | | | | | | | |
| Total | * | * | * | * | * | * | * | * | * | * | * | * |
| # with DA contact within previous year | * | * | * | * | * | * | * | * | * | * | * | * |
| Adults (18+) | | | | | | | | | | | | |
| Total | * | * | * | * | * | * | * | * | * | * | * | * |
| # with DA contact within previous year | * | * | * | * | * | * | * | * | * | * | * | * |
| Housing | | | | | | | | | | | | |
| # Clients permanently housed as a result of new Act79 housing funding | 0 | 0 | 0 | 0 | 3 | 1 | 2 | 1 | 1 | 1 | 0 | |
| Total # enrolled to date | 129 | 116 | 116 | 127 | 126 | 120 | 122 | 123 | 123 | 123 | 122 | |
| Involuntary Transportation | | | | | | | | | | | | |
| Adults (total transports) | | | | | | | | | | | | |
| # of Transports | 18 | 12 | 18 | 17 | 20 | 24 | 16 | 25 | 18 | 21 | * | |
| % Non-Restrained | 83% | 67% | 61% | 76% | 95% | 75% | 50% | 76% | 28% | 81% | * | |
| % Restrained | 17% | 33% | 33% | 24% | 5% | 25% | 50% | 24% | 72% | 19% | * | |
| % all transports using metal restraints | 11% | 25% | 17% | 12% | 0% | 0% | 13% | 12% | 28% | 14% | * | |
| % all transports using soft restraints | 6% | 8% | 17% | 12% | 5% | 25% | 38% | 12% | 44% | 5% | * | |
| Youth Under 18 (total transports) | | | | | | | | | | | | |
| # of Transports | 11 | 7 | 2 | 8 | 6 | 0 | 2 | 1 | 6 | 5 | * | |
| % Non-Restrained | 73% | 86% | 100% | 100% | 83% | 0% | 0% | 100% | 83% | 80% | * | |
| % Restrained | 27% | 14% | 0% | 0% | 17% | 0% | 100% | 0% | 17% | 20% | * | |
| % all transports using metal restraints | 18% | 14% | 0% | 0% | 0% | 0% | 100% | 0% | 0% | 20% | * | |
| % all transports using soft restraints | 9% | 0% | 0% | 0% | 17% | 0% | 0% | 0% | 17% | 0% | * | |
| CRT Employment | | | | | | | | | | | | |
| % Employed | | 17% | | | 17% | | | * | | | | |
| Wages per employed client | | \$2,338 | | | \$2,572 | | | | | | | |



Vermont Department of Mental Health System Snapshot (March 13, 2015)

*data forthcoming

| Reporting Category | 2014 | | | | | | | | | | | |
|---|---------|---------|------|---------|---------|------|---------|---------|-----|---------|---------|-----|
| | FY14 Q3 | | | FY14 Q4 | | | FY15 Q1 | | | FY15 Q2 | | |
| | Jan | Feb | Mar | Apr | May | Jun | Jul | Aug | Sep | Oct | Nov | Dec |
| Adult Inpatient Hospital | | | | | | | | | | | | |
| % Occupancy | 87% | 88% | 89% | 91% | 93% | 89% | 82% | 85% | 86% | 89% | 87% | 81% |
| Avg. Daily Census | 146 | 147 | 151 | 153 | 157 | 150 | 153 | 159 | 162 | 167 | 164 | 153 |
| % Occupancy at No Refusal Units | 98% | 98% | 100% | 100% | 99% | 100% | 63% | 75% | 84% | 90% | 91% | 91% |
| Avg. Daily Census | 28 | 27 | 28 | 28 | 28 | 28 | 29 | 34 | 38 | 41 | 41 | 41 |
| * VPCH gradual opening of 25 beds | | | | | | | | | | | | |
| Adult Crisis Beds | | | | | | | | | | | | |
| % Occupancy | 83% | 79% | 77% | 77% | 77% | 76% | 76% | 66% | 75% | 80% | 73% | 74% |
| Avg. Daily Census | 32 | 30 | 29 | 29 | 29 | 29 | 29 | 25 | 28 | 32 | 29 | 30 |
| Applications for Involuntary Hospitalizations (EE) | | | | | | | | | | | | |
| Youth (0-17) | 5 | 4 | 7 | 5 | 9 | 10 | 4 | 3 | 8 | 5 | 10 | 8 |
| Adults | 38 | 32 | 35 | 46 | 42 | 46 | 45 | 52 | 49 | 55 | 40 | 34 |
| Total adults admitted with CRT | 9 | 11 | 8 | 9 | 9 | 14 | 15 | 10 | 16 | 13 | 14 | 11 |
| Designation (% of Total applications) | 24% | 34% | 23% | 20% | 21% | 30% | 33% | 19% | 33% | 24% | 35% | 32% |
| Total Level 1 Admissions | 14 | 8 | 10 | 11 | 18 | 16 | 9 | 14 | 9 | 7 | 10 | 6 |
| Instances when Placement Unavailable & Adult Client Held in ED | 19 | 19 | 27 | 27 | 30 | 33 | 28 | 29 | 32 | 27 | 28 | 19 |
| Adult Involuntary Medications | | | | | | | | | | | | |
| # Applications | 6 | 8 | 7 | 4 | 4 | 5 | 8 | 6 | 5 | 12 | 7 | 6 |
| # Granted Orders | 5 | 4 | 6 | 4 | 4 | 4 | 7 | 4 | 4 | 10 | 5 | 6 |
| Mean time from filing date to decision date (days) | 14 | 17 | 16 | 10 | 14 | 9 | 13 | 12 | 10 | 18 | 11 | 8 |
| Court Ordered Forensic Observation Screenings | | | | | | | | | | | | |
| # Requested | 6 | 11 | 12 | 14 | 8 | 10 | 11 | 10 | 5 | 8 | 9 | 10 |
| # Inpatient Ordered | 2 | 7 | 3 | 5 | 5 | 4 | 3 | 4 | 2 | 3 | 5 | 6 |
| VT Resident Suicides | | | | | | | | | | | | |
| Youth (0-17) | | | | | | | | | | | | |
| Total | 2 | 0 | 0 | 0 | 0 | 1 | 0 | 3 | 1 | 0 | 0 | 1 |
| # with DA contact within previous year | 2 | 0 | 0 | 0 | 0 | 1 | 0 | 1 | 0 | 0 | 0 | 0 |
| Adults (18+) | | | | | | | | | | | | |
| Total | 11 | 5 | 6 | 6 | 6 | 7 | 8 | 10 | 16 | 12 | 13 | 2 |
| # with DA contact within previous year | 1 | 1 | 0 | 2 | 2 | 3 | 1 | 2 | 3 | 2 | 1 | 0 |
| Housing | | | | | | | | | | | | |
| # Clients permanently housed as a result of new Act79 housing funding | 1 | 2 | 3 | 3 | 4 | 1 | 1 | 1 | 2 | 1 | 1 | 0 |
| Total # enrolled to date | 124 | 122 | 124 | 131 | 131 | 131 | 132 | 133 | 129 | 121 | 121 | 121 |
| Involuntary Transportation | | | | | | | | | | | | |
| Adults (total transports) | | | | | | | | | | | | |
| # of Transports | 13 | 15 | 13 | 16 | 15 | 22 | 14 | 19 | 16 | 29 | 18 | 13 |
| % Non-Restrained | 85% | 87% | 69% | 81% | 67% | 59% | 71% | 79% | 38% | 79% | 56% | 85% |
| % Restrained | 15% | 13% | 31% | 19% | 33% | 41% | 29% | 21% | 63% | 21% | 44% | 15% |
| % all transports using metal restraints | 8% | 7% | 15% | 6% | 7% | 32% | 0% | 5% | 44% | 21% | 28% | 8% |
| % all transports using soft restraints | 8% | 7% | 15% | 13% | 27% | 9% | 29% | 16% | 19% | 0% | 17% | 8% |
| Youth Under 18 (total transports) | | | | | | | | | | | | |
| # of Transports | 4 | 5 | 7 | 4 | 3 | 5 | 6 | 7 | 7 | 3 | 10 | 8 |
| % Non-Restrained | 100% | 100% | 100% | 100% | 100% | 100% | 83% | 86% | 71% | 100% | 100% | 75% |
| % Restrained | 0% | 0% | 0% | 0% | 0% | 0% | 17% | 14% | 29% | 0% | 0% | 25% |
| % all transports using metal restraints | 0% | 0% | 0% | 0% | 0% | 0% | 17% | 14% | 29% | 0% | 0% | 25% |
| % all transports using soft restraints | 0% | 0% | 0% | 0% | 0% | 0% | 0% | 0% | 0% | 0% | 0% | 0% |
| CRT Employment | | | | | | | | | | | | |
| % Employed | | 16% | | | 18% | | | 17% | | | 17% | |
| Wages per employed client | | \$2,301 | | | \$2,375 | | | \$2,339 | | | \$2,437 | |



Vermont Department of Mental Health System Snapshot (January 14, 2014)

*data forthcoming

2013

| Reporting Category | FY13 Q3 | | | FY13 Q4 | | | FY14 Q1 | | | FY14 Q2 | | |
|---|---------|---------|-----|---------|---------|-----|---------|---------|------|---------|---------|-----|
| | Jan | Feb | Mar | Apr | May | Jun | Jul | Aug | Sep | Oct | Nov | Dec |
| Adult Inpatient Hospital | | | | | | | | | | | | |
| % Occupancy | 94% | 91% | 92% | 84% | 87% | 93% | 88% | 89% | 89% | 89% | 90% | 83% |
| Avg. Daily Census | 137 | 132 | 136 | 134 | 135 | 146 | 138 | 139 | 139 | 143 | 149 | 137 |
| % Occupancy at No Refusal Units | | | | | | | 100% | 96% | 99% | 99% | 99% | 98% |
| Avg. Daily Census | | | | | | | 28 | 27 | 28 | 28 | 28 | 27 |
| Adult Crisis Beds | | | | | | | | | | | | |
| % Occupancy | 77% | 79% | 83% | 82% | 84% | 85% | 82% | 81% | 79% | 81% | 83% | 79% |
| Avg. Daily Census | 27 | 28 | 29 | 29 | 31 | 31 | 30 | 31 | 31 | 31 | 32 | 31 |
| Applications for Involuntary Hospitalizations (EE) | | | | | | | | | | | | |
| Youth (0-17) | - | - | - | 9 | 10 | 6 | 9 | 7 | 15 | 6 | 4 | 2 |
| Adults | 50 | 32 | 55 | 41 | 55 | 39 | 65 | 32 | 43 | 43 | 37 | 39 |
| Total adults admitted with CRT | 13 | 13 | 27 | 19 | 14 | 11 | 15 | 12 | 9 | 7 | 11 | 19 |
| Designation (% of Total applications) | 26% | 41% | 49% | 46% | 25% | 28% | 23% | 38% | 21% | 16% | 30% | 49% |
| Total Level 1 Admissions | 22 | 13 | 20 | 22 | 26 | 10 | 19 | 18 | 13 | 11 | 7 | 14 |
| Instances when Placement Unavailable & Adult Client Held in ED | | | | | | | | | | | | |
| | 27 | 21 | 43 | 27 | 38 | 24 | 38 | 16 | 34 | 29 | 30 | 23 |
| Adult Involuntary Medications | | | | | | | | | | | | |
| # Applications | 2 | 3 | 3 | 2 | 9 | 4 | 5 | 7 | 5 | 10 | 9 | 4 |
| # Granted Orders | 2 | 3 | 2 | 2 | 5 | 3 | 5 | 6 | 3 | 4 | 6 | 3 |
| Mean time from filing date to decision date (days) | 22 | 12 | 20 | 27 | 19 | 17 | 20 | 14 | 12 | 17 | 9 | 10 |
| Court Ordered Forensic Observation Screenings | | | | | | | | | | | | |
| # Requested | 11 | 13 | 9 | 10 | 11 | 11 | 22 | 20 | 19 | 16 | 13 | 9 |
| # Inpatient Ordered | 3 | 7 | 5 | 5 | 6 | 6 | 11 | 8 | 7 | 5 | 6 | 5 |
| VT Resident Suicides | | | | | | | | | | | | |
| Youth (0-17) | | | | | | | | | | | | |
| Total | 0 | 0 | 0 | 0 | 0 | 2 | 0 | 0 | 0 | 1 | 0 | 1 |
| # with DA contact within previous year | - | - | - | - | - | 1 | - | - | - | 0 | - | 1 |
| Adults (18+) | | | | | | | | | | | | |
| Total | 4 | 6 | 10 | 8 | 10 | 5 | 8 | 10 | 14 | 13 | 8 | 6 |
| # with DA contact within previous year | 0 | 3 | 2 | 2 | 1 | 0 | 2 | 1 | 4 | 4 | 1 | 1 |
| Housing | | | | | | | | | | | | |
| # Clients permanently housed as a result of new Act79 housing funding | 18 | 21 | 14 | 11 | 14 | 5 | 0 | 5 | 0 | 2 | 0 | 0 |
| Total # enrolled to date | 98 | 119 | 133 | 144 | 158 | 169 | 169 | 176 | 176 | 168 | 123 | 123 |
| Involuntary Transportation | | | | | | | | | | | | |
| Adults (total transports) | | | | | | | | | | | | |
| # of Transports | 19 | 17 | 18 | 11 | 18 | 13 | 18 | 12 | 18 | 15 | 17 | 17 |
| % Non-Restrained | 58% | 94% | 61% | 82% | 78% | 85% | 72% | 75% | 83% | 100% | 94% | 65% |
| % Restrained | 42% | 6% | 39% | 18% | 22% | 15% | 28% | 25% | 17% | 0% | 6% | 35% |
| % all transports using metal restraints | 16% | 6% | 6% | 9% | 6% | 8% | 17% | 25% | 17% | 0% | 6% | 18% |
| % all transports using soft restraints | 26% | 0% | 33% | 9% | 17% | 8% | 11% | 0% | 0% | 0% | 0% | 18% |
| Youth Under 10 (total transports) | | | | | | | | | | | | |
| # of Transports | 3 | 3 | 0 | 0 | 0 | 0 | 0 | 0 | 2 | 0 | 0 | 0 |
| % Non-Restrained | 100% | 100% | - | - | - | - | - | - | 100% | - | - | - |
| % Restrained | 0% | 0% | - | - | - | - | - | - | 0% | - | - | - |
| % all transports using metal restraints | 0% | 0% | - | - | - | - | - | - | 0% | - | - | - |
| % all transports using soft restraints | 0% | 0% | - | - | - | - | - | - | 0% | - | - | - |
| CRT Employment | | | | | | | | | | | | |
| % Employed | | 15% | | | 16% | | | 17% | | | 15% | |
| Wages per employed client | | \$2,318 | | | \$2,457 | | | \$2,298 | | | \$2,456 | |



Vermont Department of Mental Health System Snapshot

Definitions

| | |
|--|---|
| Inpatient Hospital | The hospitals designated by the Commissioner of Mental Health for involuntary psychiatric treatment: Brattleboro Retreat (BR), Central Vermont Medical Center (CVMC), Fletcher Allen Health Care (FAHC), Rutland Regional Medical Center (RRMC), Windham Center at Springfield Hospital (WC), and Vermont Psychiatric Care Hospital (VPCH). Adult Inpatient Units at VPCH, RRMC - South Wing, and Brattleboro Retreat - Tyler 4. The units designated as no refusal units: BR - Tyler 4, RRMC - South Wing, VPCH. |
| Designated Agency Crisis Bed | Emergency Services beds intended to provide crisis intervention, respite, or hospital diversion that are staffed by and under the supervision of a designated community mental health agency (DA). Statewide averages are adjusted to exclude programs on days where there were no updates submitted to the bed board. |
| Court-ordered Forensic Observations | Forensic patients are designated when there is criminal justice involvement and when there are questions concerning competency/sanity of an individual being arraigned. A screening is requested by a community mental health agency pursuant to §4815 13 VSA. Numbers represent a point in time count mid-month. |
| Emergency Examination (EE) | An application for emergency examination has been completed for involuntarily admission (§7508 of 18 VSA) to a designated hospital for psychiatric treatment (danger to self or others) subsequent to an evaluation by community mental health agency screener & medical doctor. |
| Restrained Transport (formerly called Secure) | Transport via law enforcement utilizing either metal or soft restraints. |
| Non-Restrained Transport (formerly called Non-Secure) | Transport not utilizing restraints; this can include plain clothed law enforcement, Designated Agency transport teams, or other means of transport such as family members. |
| VT Resident Suicides | Based on <u>PRELIMINARY</u> data from the Vital Statistics System maintained by Vermont Department of Health and Monthly Service Report (MSR) data provided by the Department of Mental Health (DMH). Cross-sector data analysis was conducted using LinkPlus, a probabilistic statistical linkage software developed by the CDC for linking records across databases. MSR data includes services provided by community designated agencies for clients served by DAs within the year prior to death. Primary Program is defined as the primary program assignment on the client's last service with DMH. Monthly counts are subject to change as more information is made available. |
| Housing | Based on the number of applications approved, in the months the program has been operating and the total approved to date. Enrollment to date numbers do not necessarily sum to total numbers housed. Data cleaning is on-going. |